

PHILIPS

Ultrasound

Compact 5000 series



**It's not just compact.
It's compact without compromise.**

Philips Compact Ultrasound System 5000 series for point of care

Philips performance and portability like never before

You need the confidence of sophisticated image quality to help make rapid precise diagnosis and accurately guided procedures. The Compact 5000 series provides exceptional image quality, flexibility, and standardized, efficient workflow for confident scanning across all point of care (POC) exam types. It is designed for the increasing challenges in healthcare at the patient bedside. Partner with Philips for trusted brand support, reliability and durability to better serve your fast-paced environment.



Mobile efficiency

Designed for mobility and performance, the Compact 5000 series is the advanced compact version of the Philips EPIQ Elite and Affiniti systems with shared workflow, common interface and transducer compatibility across the Philips portfolio

- Trackpad and user-centric interface with digital depth gain compensation manipulation
- Responsive architecture is customizable per user
- Streamlined control panel
- Quick boot-up
- On-board storage
- Height-adjustable
- Back-end transducer connectors with cord control



Sealed control panel

for cleanability and disinfection

Dedicated POC settings

Superb exam parameters and customized protocols for ease of use and increased efficiency



iSCAN intelligent scanning

for one-button 2D, color and PW optimization



Long battery life

for up to 2.5 hours of scanning with extended batteries



Advanced performance

with shared hardware and software architecture across the EPIQ Elite and Affiniti high-level cart platforms

- PureWave transducer compatibility across portfolio, including TEE
- High frame rates
- Advanced cardiac technology



Protect your valued data

with defense-in-depth security and award-winning customer service

Seamless connectivity

using WiFi to share images and reports



Real-time collaboration with colleagues

through Philips Collaboration Live* so clinicians can securely talk, text, screen-share and video-stream directly from the system



Award-winning compact design

for easy mobility, sleek innovative design for ergonomics, speed and ease of use, and quality-tested for durability with safe cleaning measures





93% of users agree that the system performed to the user's expectations for a mobile system*

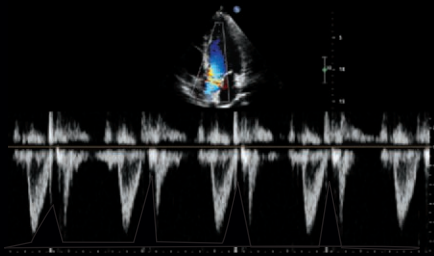


90% of users agree that the common UI and workflow shared with EPIQ and Affiniti may help reduce user training*

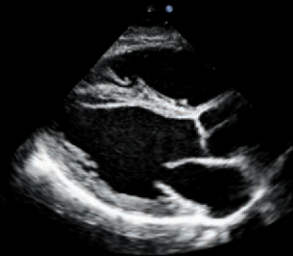


Supports success across patient types and care locations

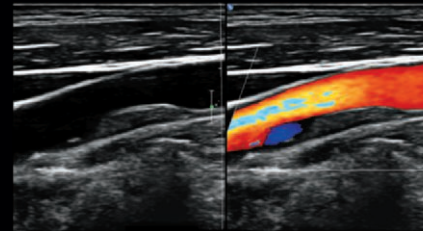
Right performance, first scan



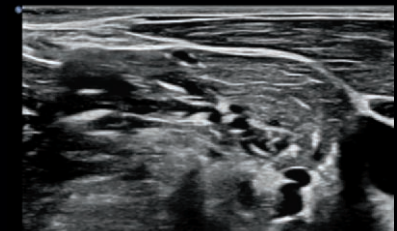
Left ventricular outflow tract



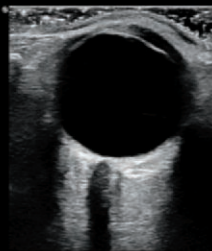
Cardiac plax view



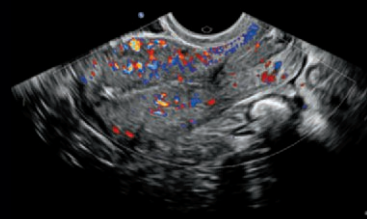
Carotid artery- dual display



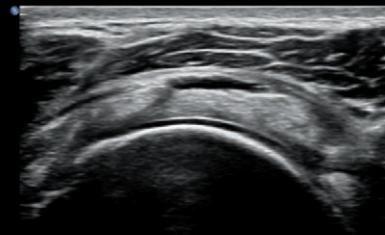
Brachial plexus nerves



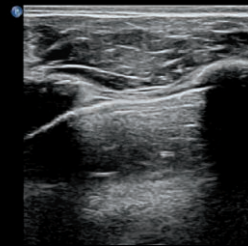
Optic nerve



Endovaginal uterus



Shoulder rotator cuff



Lung pleura lining

* Philips CX50 system used for comparison. External evaluation at two sites with a total of 29 patient exams.

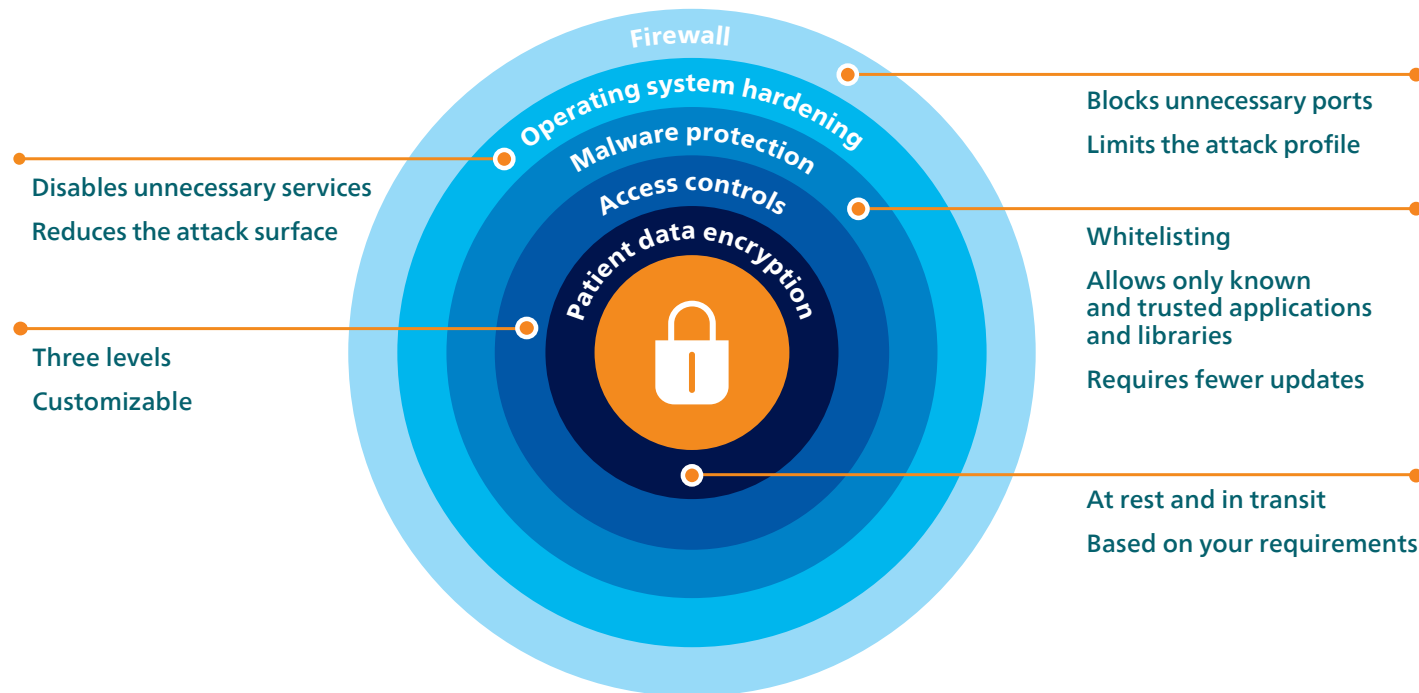
Security and service to support your goals

Defense-in-depth security protects you and your data

Philips ultrasound systems are built both for outstanding clinical capability and exceptional security through a five-layer defense-in-depth security.

#1 in ultrasound customer service satisfaction for nearly 30 years*

We offer RightFit, flexible service agreements with warranty programs that fit your needs. Please talk with your Philips representative for more information.



Winner 2020
IMV ServiceTrak
Imaging Awards

Best of general ultrasound
Best Service
Best System Performance

**Best of cardiovascular
ultrasound**
Best Service
Best Customer Satisfaction

*Philips is rated number one in overall service performance for ultrasound for 28 consecutive years in the annual IMV ServiceTrak survey in the USA.

Collaboration Live* supports confident communication for fast decision-making

Experience premium performance at the point of care.

Access expert team members on demand, extending your team without expanding it. Now your team can finally be in multiple places at once, providing decision support on complex exams and training on point-of-care protocols in real time.



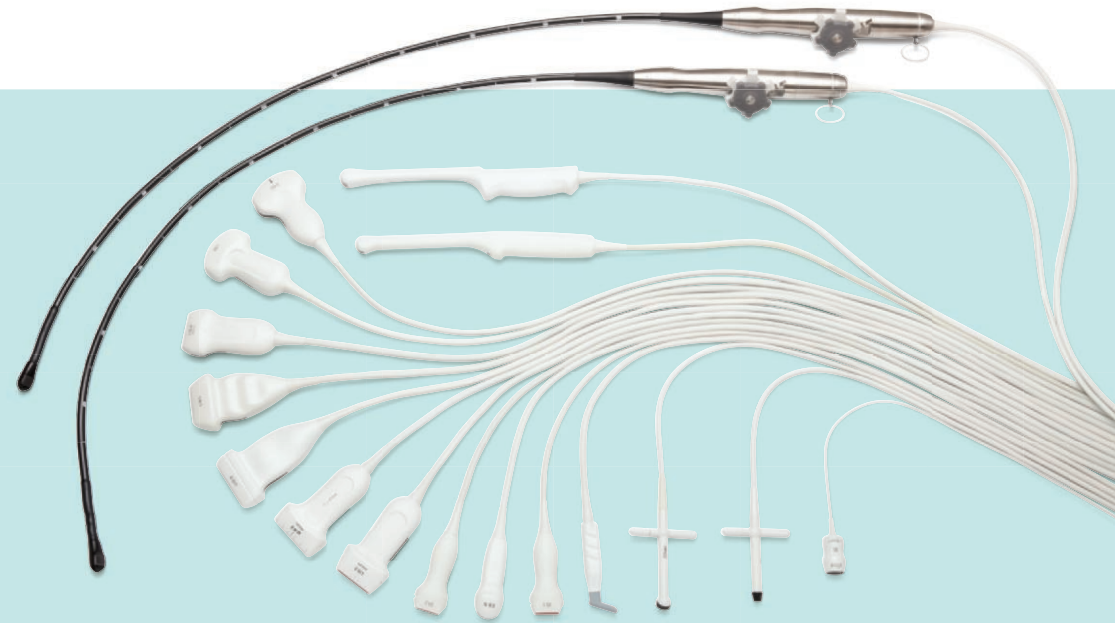
Users can reach out for additional guidance and support directly from the ultrasound system.



*Contract required. Collaboration Live is designed to enable clinical collaboration and consultation on the Philips Compact Ultrasound System 5000 series, but is not intended for diagnostic use on that series. Collaboration Live is intended for clinical collaboration, consultation and remote diagnostic use on Philips EPIQ and Affiniti ultrasound systems, release 9.0 or higher.

Premium is now compact

The Compact 5000 series shares imaging architecture and transducers across our premium platforms. This means performance that allows you to see important structures in detail, from deep abdominal views to superficial scans to cardiac and transesophageal imaging, and from small pediatric patients to technically challenging adult body types. Sharing transducers across systems helps make the most of your ultrasound investment.



© 2022 Koninklijke Philips N.V. All rights are reserved. Philips reserves the right to make changes in specifications and/or to discontinue any product at any time without notice or obligation and will not be liable for any consequences resulting from the use of this publication. Trademarks are the property of Koninklijke Philips N.V. or their respective owners.



www.philips.com

Printed in the Netherlands.
4522 991 79701 * NOV 2022