

**PHILIPS**

Ultrasound

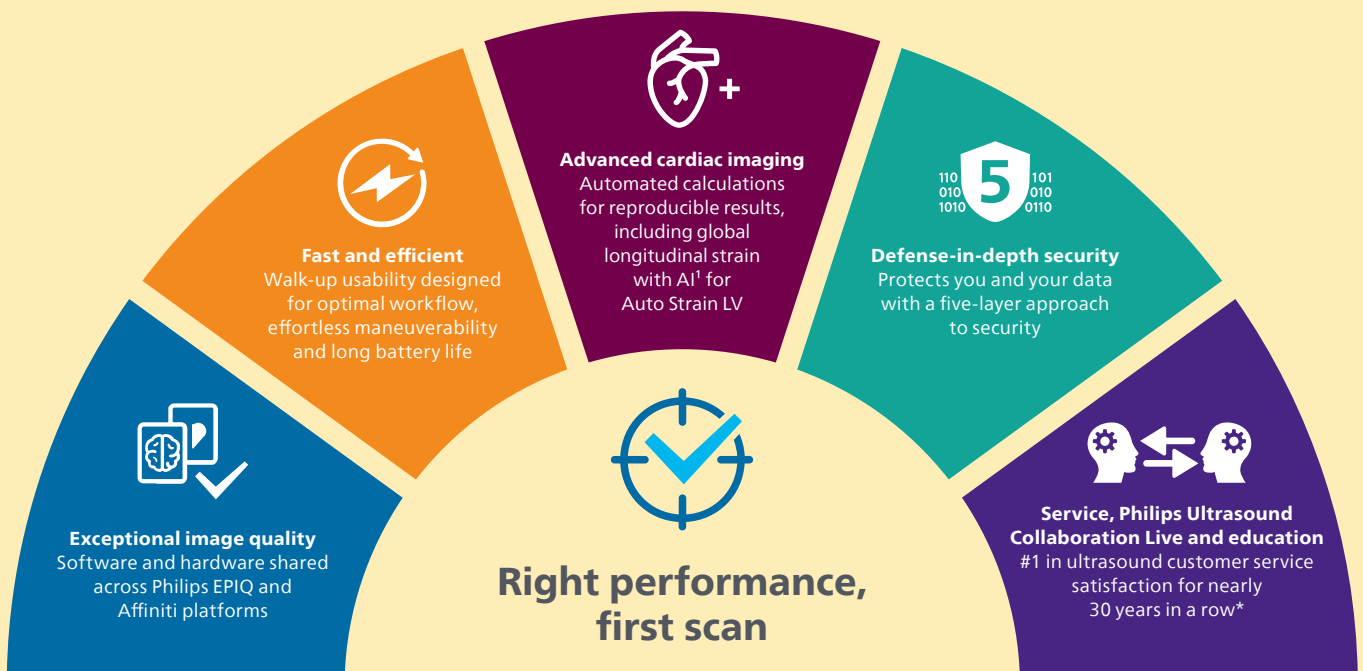
Point of care

# Advanced performance in just the right size for critical care

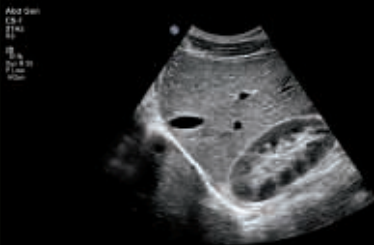
Philips Compact Ultrasound 5000 series

Premium, compact ultrasound can help meet the increasing challenges of caring for critically ill patients. Compact 5000 series offers exceptional image quality, clinical versatility and standardized, efficient workflow.

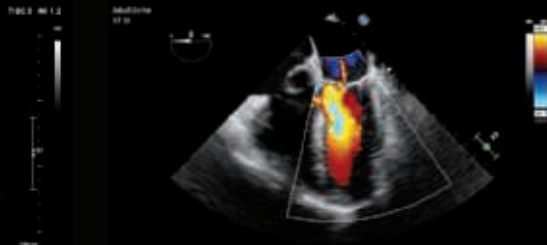
**It's not just compact. It's compact without compromise.**



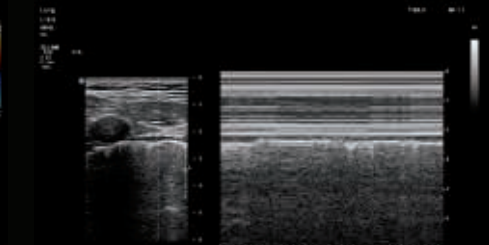
\*Philips is rated number one in overall service performance for ultrasound for 28 consecutive years in the annual IMV ServiceTrak survey in the USA.



RUQ liver and kidney



TEE of left ventricle and mitral valve with color

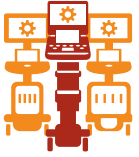


M-Mode lung

# Premium is now compact



**Mobile efficiency**  
that's designed for performance, with shared workflow, common interface and transducer compatibility across the Philips portfolio



**Advanced performance**  
with shared hardware and software architecture across the Philips EPIQ Elite and Affiniti high-level cart platforms



**Ultrasound Collaboration Live\***  
allows clinicians to securely talk, text, screen share and video stream directly from the system



**Long battery life**  
for up to 2.5 hours of scanning with extended batteries



**Easy connectivity**  
using WiFi to share images and reports



**Sealed control panel**  
for cleanability and disinfection



**Defense-in-depth security**  
to protect your valuable data



**AutoSCAN intelligent scanning**  
for one-button 2D, color and PW optimization



**Award-winning compact design**  
for easy mobility



**Compatible with 20 transducers across the Philips portfolio to make the most of your investment**



\* Contract required. Ultrasound Collaboration Live is designed to enable clinical collaboration and consultation on the Philips Compact Ultrasound 5000 series but is not intended for diagnostic use on that series. Collaboration Live is intended for clinical collaboration, consultation and remote diagnostic use on Philips EPIQ and Affiniti ultrasound systems, release 9.0 or higher.  
1. According to the definition of AI from the EU High-Level Expert Group.