



PHILIPS

Ultrasound

Lumify

The ultrasound you trust.
The advances that matter.

Lumify ultrasound on Android

Exceptional ultrasound imaging

Lumify handheld ultrasound offers images that support diagnostic confidence, along with superb reliability and lightweight transducers that offer extended scanning without risk of overheating.

**The
choice
is yours**

Lumify is now compatible
with more than
40 different devices.

Your data, your way

With Lumify, your data and images stay with you and are stored however you choose. Lumify is HIPAA-compliant and is in use in hospitals worldwide.

Fast diagnosis and treatment.

Our app-based ultrasound makes it easy to get started. Three simple steps, and you're ready to go.

1  **Download**
the Lumify app
to your compatible
smart device.*

2  **Connect
and activate**
the Lumify transducer
to your smart device.

3  **Scan**
with the exceptional
quality of Philips
imaging technology.

Meet today's point-of-care imaging challenges

Let nothing get in the way of clinical performance

Crystal-clear diagnostic insights depend on high-resolution imaging performance across shallow and deeper applications.

That's the exceptional imaging performance you can expect from Philips handheld ultrasound.

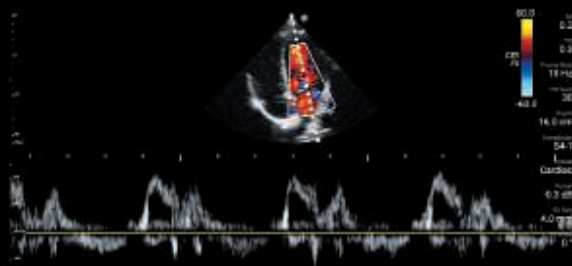
* See the Lumify website for the list of compatible smart device options:
philips.com/lumify-compatible-devices



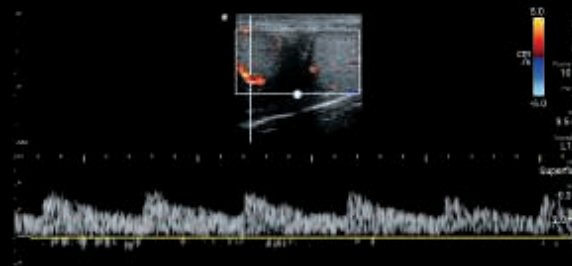
Pulsed Wave Doppler for confident hemodynamic assessment

Lumify offers Pulsed Wave Doppler across all clinical exams, available on all transducers for accurate quantitative analysis.

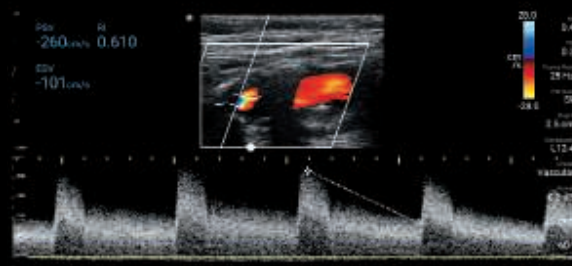
Provides comprehensive Pulsed Wave Doppler measurements, iSCAN optimization and auto-linked color Doppler steering.



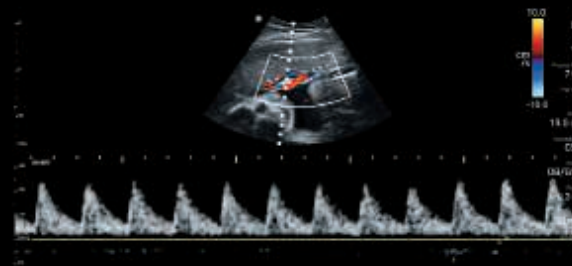
S4-1 cardiac Doppler



L12-4 testicular flow Doppler



L12-4 internal carotid artery color flow Doppler



C5-2 fetal cord Doppler

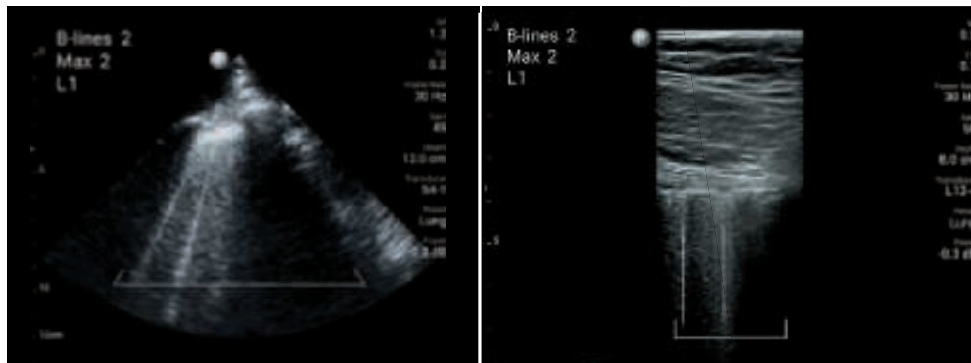
Assess early fetal age

Tools for fetal age measurement in early gestation include crown-rump length (CRL) and mean sac diameter (MSD).



Guided B-line quantification for high-quality, reliable insights in lung ultrasound

The ability to consistently and accurately identify and track the presence and severity of B-lines is vital to the treatment of critically ill patients with lung conditions. Guided B-line quantification* – unique to Lumify in handheld ultrasound – delivers reproducible, reliable results that can help enhance your confidence when making clinical decisions.



B-line image with S4-1 transducer

B-line image with L12-4 transducer

*Only available on the S4-1 and L12-4 transducers.



Help prevent infection

Prevent contamination by blood-borne pathogens and provide infection control by covering your Lumify transducer with a sterile transducer cover.

Decades of imaging expertise. Quality you can trust.

Lumify combines flexibility, simplicity and quality for point-of-care practitioners to support informed decisions.



Lumify
C5-2
broadband
curved array
transducer

Abdominal with lung and gallbladder
presets and Ob/Gyn capabilities



Lumify
L12-4
broadband
linear array
transducer

Variety of clinical applications, including soft tissue,
musculoskeletal, lung and vascular scanning



Lumify
S4-1
broadband
phased array
transducer

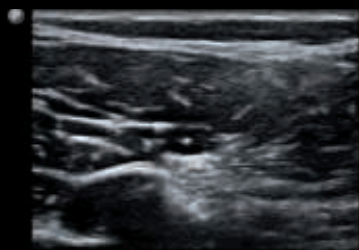
Presets for cardiac, abdominal
with lung, Ob/Gyn and FAST exams



Exceptional clarity across all imaging modes



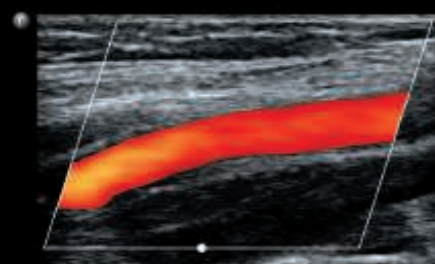
C5-2 umbilical cord with color



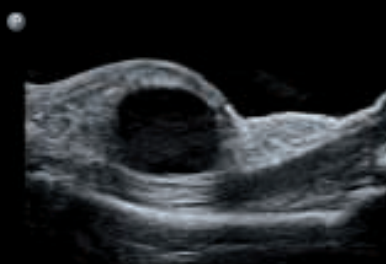
L12-4 sciatic nerve in popliteal space



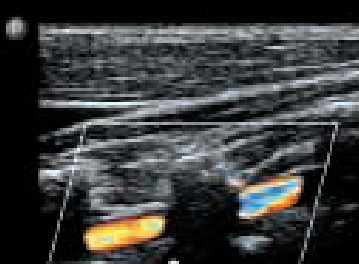
C5-2 liver and kidney



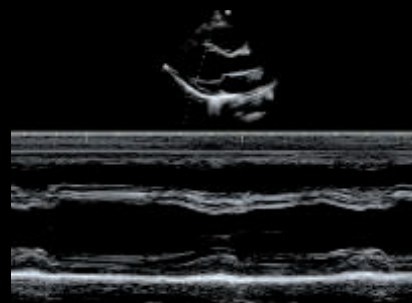
L12-4 internal carotid artery with color



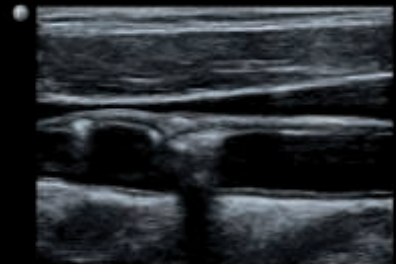
L12-4 soft tissue with cyst



L12-4 vertebral artery with color



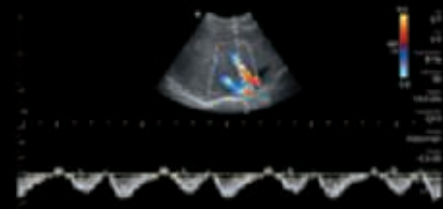
S4-1 cardiac with M-mode



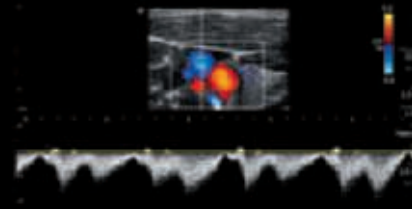
L12-4 common carotid artery with plaque



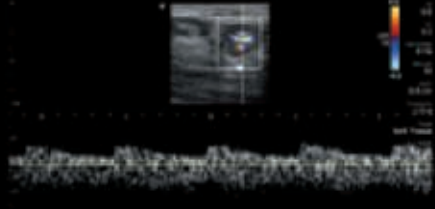
C5-2 aorta with color and Pulse Wave



C5-2 hepatic vein with color and Pulse Wave



L12-4 jugular vein with color and Pulse Wave



L12-4 lymph node with color and Pulse Wave

Integrated tele-ultrasound. Because the world moves in real time.

The Philips Lumify integrated tele-ultrasound powered by the Reacts collaborative platform brings health professionals together with real-time video and audio calls, live ultrasound streaming and virtual guidance.

Accessible pricing

Because Lumify works on compatible Android devices, it relieves you of the burden of paying for a custom ultrasound machine.

When you purchase Lumify, you'll receive everything you'll need to get started.

- A Philips Lumify transducer
- Lumify ultrasound app
- Ongoing software upgrades
- Manufacturer's warranty on hardware
- Access to Philips service and education

Call **1-844-MYLUMIFY**
or visit **philips.com/lumify**

For a full list of compatible devices go to
philips.com/lumify-compatible-devices.





© 2023 Koninklijke Philips N.V. All rights are reserved. Philips reserves the right to make changes in specifications and/or to discontinue any product at any time without notice or obligation and will not be liable for any consequences resulting from the use of this publication. Trademarks are the property of Koninklijke Philips N.V. or their respective owners.

www.philips.com/lumify

4522 991 82961 * SEP 2023